

CUSTOMER SIGNATURE: \_\_\_\_\_

DATE: \_\_\_\_\_

IN AN EFFORT TO ENSURE ACCURACY, PLEASE REVIEW YOUR DRAWING DIMENSIONS AND FITTING SIZES FOR POSSIBLE ERRORS AND OMISSIONS. CALL WITH ANY CORRECTIONS BEFORE SIGNING THIS DRAWING. ALL TANKS DESIGNED AND/OR BUILT, IN PART OR COMPLETE, BY ALUMITANK OR ANY OF ITS PEOPLE ARE CERTIFIED FOR USE ONLY WITH DISTILLATE, HYDRAULIC, OR WATER. ANY VARIATIONS OF USE OR MODIFICATIONS OF THE TANK ARE PROHIBITED. CUSTOMER SIGNATURE ON DOCUMENT/DRAWING INDICATES AGREEMENT BY SIGNER OR RECIPIENT OF TANK AND HOLDS ALUMITANK HARMLESS.

CUSTOMER NAME:

SIDE OF TRUCK:

SHOP #:

PARTS:

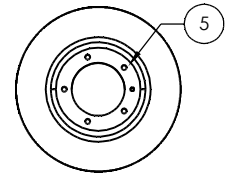
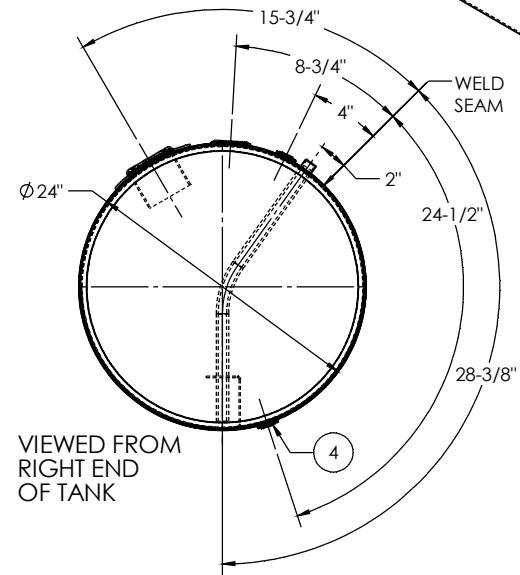
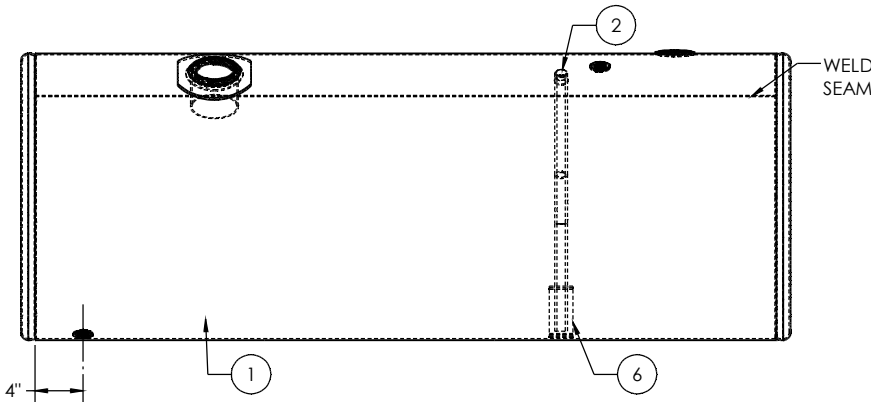
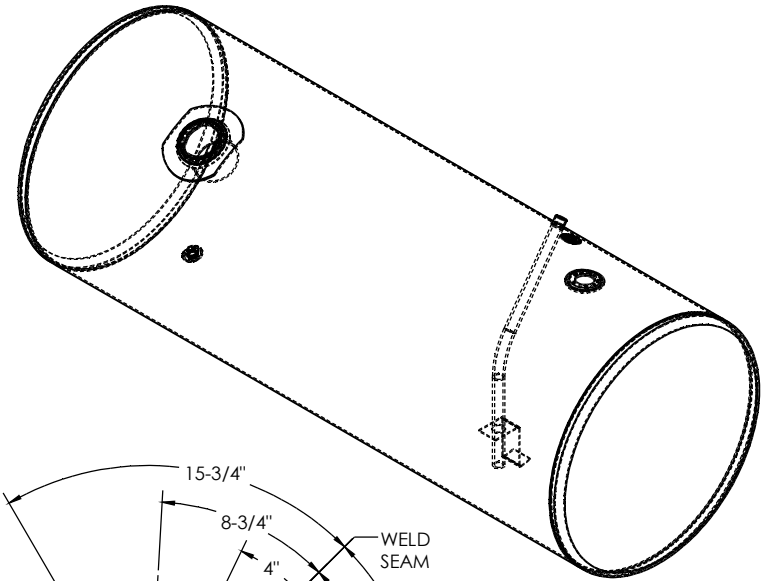
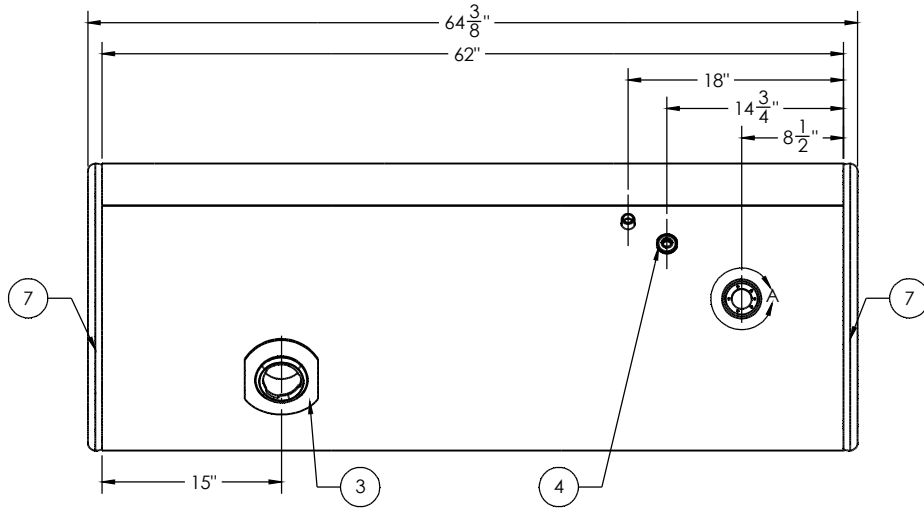
FINISH:

CAPACITY:

SERIAL #:

CHASSIS STYLE:

SHIP DATE:



DETAIL A  
SCALE 1 : 3

| ITEM NO. | PART NUMBER    | DESCRIPTION                           | QTY. |
|----------|----------------|---------------------------------------|------|
| 1        | BRL-123253     | 1/8" TANK BARREL                      | 1    |
| 2        | TBS-501200     | 1/2" NPTF TUBE                        | 1    |
| 3        | FLN-110022300  | POLISHED ALUMINUM PETERBILT FILL NECK | 1    |
| 4        | FLG-050230     | 1/2" NPTF POLISHED ALUMINUM FLANGE    | 2    |
| 5        | BSE-00183220   | CURVED POLISHED ALUMINUM SENDER BASE  | 1    |
| 6        | STR-001        | STABILIZER FOR TUBE                   | 1    |
| 7        | ECP-3840013100 | 24" POLISHED ALUMINUM END CAP         | 2    |

|                   |     |                             |          |                                      |           |           |  |      |  |
|-------------------|-----|-----------------------------|----------|--------------------------------------|-----------|-----------|--|------|--|
| TITLE:            |     | UNLESS OTHERWISE SPECIFIED: |          | DRAWN                                |           | NAME      |  | DATE |  |
| SIZE<br><b>C</b>  | REV | QC                          | INITIALS | DIMENSIONS ARE IN INCHES             | CHECKED   |           |  |      |  |
|                   |     | PSI                         |          | TOLERANCES:                          | ENG APPR. |           |  |      |  |
|                   |     | DIMS                        |          | FRACTIONS: ±                         | ENG APPR. |           |  |      |  |
|                   |     | PARTS                       |          | ANGULAR MATCH BEND: ±                | ENG APPR. |           |  |      |  |
| TAG               |     | TWO PLACE DECIMAL: ±        |          |                                      |           |           |  |      |  |
| PKG               |     | THREE PLACE DECIMAL: ±      |          |                                      |           |           |  |      |  |
| MATERIAL:         |     |                             |          | INTERPRET GEOMETRIC TOLERANCING PER: |           | COMMENTS: |  |      |  |
| 5052 H32 ALUMINUM |     |                             |          | SEE BOM                              |           |           |  |      |  |
| FINISH:           |     |                             |          | DO NOT SCALE DRAWING                 |           |           |  |      |  |

**AlumiTank**<sup>®</sup>  
THE FUEL TANK SPECIALISTS

11317 N. US HWY 14 HARVARD, IL 60033 815-943-6649

800-652-6630 FAX 855-774-6918 WWW.ALUMITANK.COM INFO@ALUMITANK.COM

DWG. NO. **123253**

SCALE: 1:8 WEIGHT: SHEET 1 OF 1