

CUSTOMER SIGNATURE: _____

DATE: _____

IN AN EFFORT TO ENSURE ACCURACY, PLEASE REVIEW YOUR DRAWING DIMENSIONS AND FITTING SIZES FOR POSSIBLE ERRORS AND OMISSIONS. CALL WITH ANY CORRECTIONS BEFORE SIGNING THIS DRAWING. ALL TANKS DESIGNED AND/OR BUILT, IN PART OR COMPLETE, BY ALUMITANK OR ANY OF ITS PEOPLE ARE CERTIFIED FOR USE ONLY WITH DISTILLATE, HYDRAULIC, OR WATER. ANY VARIATIONS OF USE OR MODIFICATIONS OF THE TANK ARE PROHIBITED. CUSTOMER SIGNATURE ON DOCUMENT/DRAWING INDICATES AGREEMENT BY SIGNER OR RECIPIENT OF TANK AND HOLDS ALUMITANK HARMLESS.

CUSTOMER NAME: _____

SIDE OF TRUCK: _____

SHOP #: _____

PARTS: _____

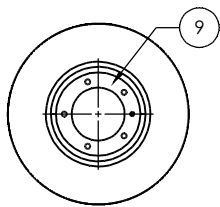
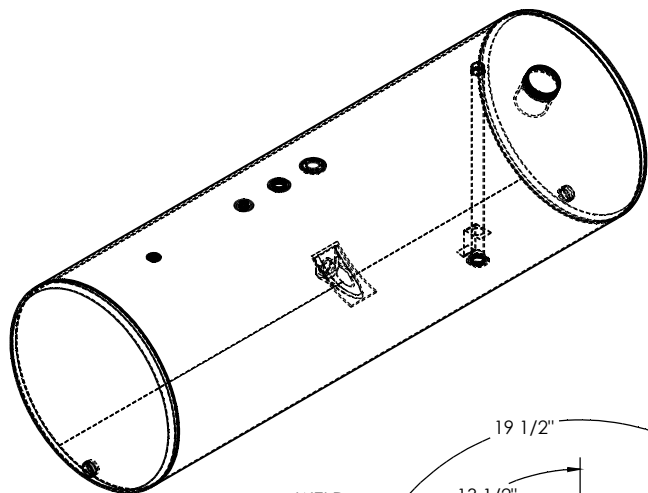
FINISH: _____

CAPACITY: _____

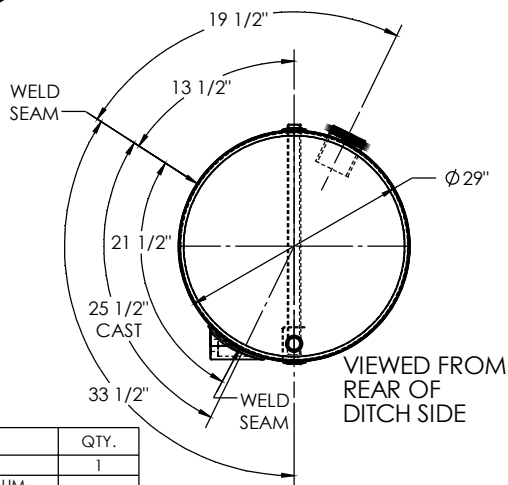
SERIAL #: _____

CHASSIS STYLE: _____

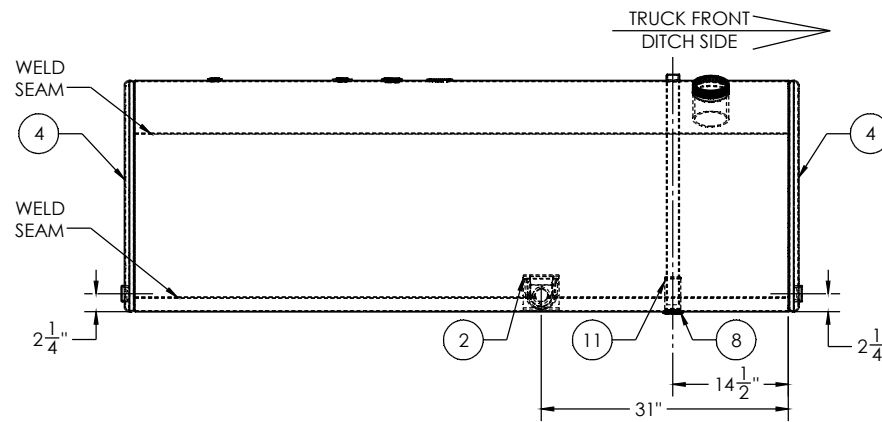
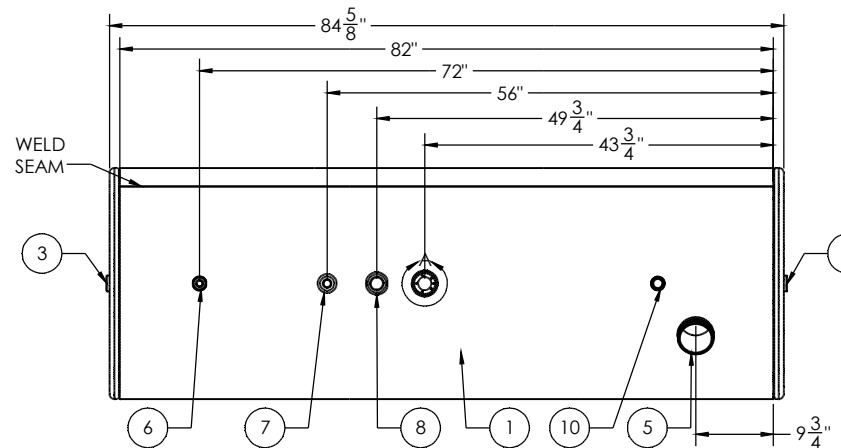
SHIP DATE: _____



DETAIL A
SCALE 1 : 3




VIEWED FROM
REAR OF
DITCH SIDE



ITEM NO.	PART NUMBER	DESCRIPTION	QTY.
1	BRL-139970	1/8" TANK BARREL	1
2	COC-80210	1 1/4" NPTF CAST ALUMINUM CASTING	1
3	CPL-01823	HALF 1 1/4" NPT POLISHED ALUMINUM COUPLING	2
4	ECP-46400131010 (ECP-2900-1X-1250-CPL)	29" POLISHED ALUMINUM END CAP WITH 1 1/4" COUPLING	2
5	FLN-0801412310	5' LONG - 4" NPSM - 8 TPI POLISHED ALUMINUM FILL NECK	1
6	FLG-050230	1/2" NPTF POLISHED ALUMINUM FLANGE	1
7	FLG-060230	3/4" NPTF POLISHED ALUMINUM FLANGE	1
8	FLG-080230	1 1/4" NPTF POLISHED ALUMINUM FLANGE	2
9	BSE-00183220	CURVED POLISHED ALUMINUM SENDER BASE	1
10	TBS-703200	1" NPT TUBE	1
11	STR-001	STABILIZER FOR TUBE	1

TITLE:		UNLESS OTHERWISE SPECIFIED:		NAME	DATE
SIZE C	REV	QC	INITIALS	DRAWN	
		PSI		CHECKED	
		DIMS		ENG APPR.	
		PARTS		MFG APPR.	
	TAG			D.A.	
	PKG			COMMENTS:	
<small>PROPRIETARY AND CONFIDENTIAL</small> THE INFORMATION CONTAINED IN THIS DRAWING IS THE SOLE PROPERTY OF ALUMITANK. ANY REPRODUCTION IN PART OR AS A WHOLE WITHOUT THE WRITTEN PERMISSION OF ALUMITANK IS PROHIBITED.		<small>DIMENSIONS ARE IN INCHES</small> TOLERANCES: FRACTIONS: ± ANGULAR: MATCH BEND ± TWO PLACE DECIMAL ± THREE PLACE DECIMAL ± INTERPRET GEOMETRIC TOLERANCING PER:		MATERIAL: 5052 H32 ALUMINUM FINISH: SEE BOM DO NOT SCALE DRAWING	



THE FUEL TANK SPECIALISTS

11317 N. US HWY 14 HARVARD, IL 60033 815-943-6649

800-652-6630 FAX 855-774-6918 WWW.ALUMITANK.COM INFO@ALUMITANK.COM

DWG. NO.
139970

SCALE: 1:12 | WEIGHT: | SHEET 1 OF 1